

2009 COMMUNITY REPORT

WHO WE ARE AND WHAT WE DO

The Stratford and Perth County Community Foundation is part of a world-wide network of foundations whose objective is to help build stronger and more vibrant communities in which to live, work and play. In Canada we are in partnership with over 170 other community foundations supported by Community Foundations of Canada, our umbrella organization.

To achieve our goal of building stronger and more vital communities in Perth County we focus our activities in three areas:

We work with donors to build enduring endowment funds and other funds that ensure dynamic futures for all Perth County communities.

We grant funds to the widest possible range of organizations and initiatives using income from endowments.

We bring people together from all parts of our community to stimulate new ideas, build participation and strengthen community philanthropy.

Our goal depends on many dedicated people and essential elements working together. But three elements stand out as crucial to its achievement:

Vision for what a community can be, and for innovative, forward-looking, sustainable solutions that will bring that vision to life; **Collaboration** to identify and capitalize on opportunities and solutions across community sectors; and **Investment** to meet today's needs and those to come.

Our stated mission is to enrich the lives of people in Perth County by providing support to charitable organizations through grants made possible by responsible stewardship of endowment funds.

“It is the long history of humankind... those who learned to collaborate and improvise most effectively have prevailed.” Charles Darwin

MESSAGE FROM THE CHAIR AND EXECUTIVE DIRECTOR

It seems like ‘collaboration’ has replaced ‘teamwork’ as the new buzz word when acknowledging the efficiencies and efficacies achieved when people join forces whether on a work project, community project or international endeavour. The idea of teamwork may have its limitations bringing to mind a more intra-organizational coming together, homeostatic in appearance and perspective. On the other hand collaboration implies a dynamic, fluid, and diverse coming together – quite often inter-organizational, inter-disciplinary or inter-sector – to achieve common goals.

Community Foundations of Canada

(CFC), our umbrella organization, includes ‘collaboration’, along with ‘vision’ and ‘investment’, in its short list of three elements crucial in achieving community vitality. They define collaboration as the ability to identify and capitalize on opportunities and solutions across community sectors. CFC partners with more than 170 community foundations coast to coast in Canada providing support, advocacy and an important voice at a national level for all community foundations.

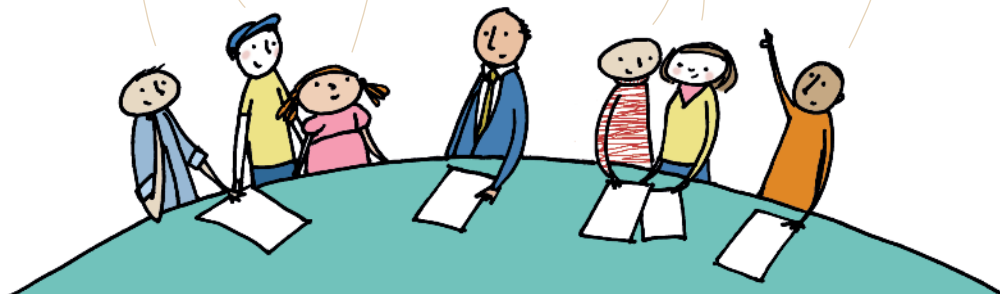
Collaboration is the perfect word to describe the Foundation’s activities during the past year. While many organizations have discovered the necessity to collaborate to survive in light of difficult economic times, collaboration has always been at the heart of what community foundations are all about connecting people who want to make a difference to the causes, issues and organizations that are important to them.



Picture: Tim MacDonald, Chair, Foundation Board of Directors (left) and Elizabeth Hachborn, Executive Director with team recruit Bruce Grasby at the Habitat for Humanity Stratford-Perth 2009 Stratford Build.

Early in the year we began a new collaboration with the **Ontario Trillium Foundation** (OTF) to raise our profile in the community to better serve our donors and the charitable sector. The OTF grant enabled us to do research that helped the charitable sector and moved us forward in the search for an event to call our own (see page 4). Also as a result of the grant we hosted our first workshops for the charitable sector (see page 4) which took place in Listowel, St. Marys and Stratford. We have come to value OTF as an ongoing partner in helping to build community vitality in Perth County.

Continued inside left.



Continued from front page.

A new partnership was formed with the **Foundation for Rural Living (FRL)** whose mandate is to build vital rural communities. They, with the help of their funders, assist rural charitable organizations to build capacity by placing Rural Development Officers (RDO) in rural charities. We welcomed our RDO, Darlene Morash, in March (see page 4).

We collaborated with three families (one each in Stratford, North Perth and West Perth) and one municipality to create four new community endowments (see page 3). These funds will provide continuous and long term investments benefiting the residents of Perth County.

We worked with eight local organizations to provide grant funding for their projects (see page 5). We partnered with **Habitat for Humanity Stratford-Perth** by supplying financial and human resources for their Stratford Build Team-for-a-Day program.

We partnered with Ontario Trillium Foundation again to assemble a group of community leaders to brainstorm the delivery of funding to smaller arts organizations. **Perth Arts Connect** was formed as a result of this collaboration among artists, arts organizations, community organizations and funders. The goal of Arts Connect is to promote and support arts, culture and heritage to ensure that creativity and imagination remain a vital part of the community's social and economic life. Our work with the arts community facilitated our commissioning of a piece of art – to be unveiled early in 2010 – for use on Foundation note cards, grant plaques and other materials.

Our partnerships and collaborations during the past year have enabled us to achieve more than we could have acting on our own. By working together we can all contribute to making the communities in Perth County stronger and more vibrant places in which to live, work and play.

Tim MacDonald
Chair, Board of Directors

Elizabeth Hachborn
Executive Director

TEN REASONS TO GIVE THROUGH THE COMMUNITY FOUNDATION

1. We are a local organization with deep roots in the community.
2. Our staff and volunteers have broad expertise regarding community issues and needs.
3. We provide highly personalized service tailored to each individual's charitable and financial interests.
4. Our funds help people invest in the causes they care about most.
5. We accept a wide variety of assets and can facilitate even the most complex forms of giving.
6. We partner with professional advisors to create highly effective approaches to charitable giving.
7. We offer maximum tax advantage under federal law for most gifts.
8. We multiply the impact of gift dollars by pooling them with other gifts and grants.
9. We build endowment funds that benefit the community forever and help create personal legacies.
10. We build community vitality, fostering collaboration on issues of broad interest to create positive change.

BOARD OF DIRECTORS

Tim MacDonald, Stratford - Chair
Mary McTavish, Stratford - Secretary
Bob Lightfoot, Stratford - Treasurer
Ron Cameron, Perth East
Gerry Culliton, Stratford
Jennifer Lamb, Stratford
James Laughton, West Perth
Annabell Thomson, Perth South
Jim Young, Stratford

GRANT ADVISORY COMMITTEE

Ron Cameron, Stratford - Chair
Ellen Balmain, Stratford
Ted Blowes, Perth East
Karen Haslam, Stratford
Jaret Henhoeffler, Perth East
Lisa McClelland, St. Marys
Lynne McDonald, Stratford
Annabell Thomson, Perth South
Don Van Galen, St. Marys
Anne Walsh, Stratford

DEVELOPMENT COMMITTEE

James Laughton, West Perth - Chair
Don Evans, St. Marys
Tim MacDonald, Stratford
Amy Robinet, Perth South

INVESTMENT COMMITTEE

Berny Nymeyer, Stratford - Chair
Jeff Keller, Stratford
Jim Leis, Perth East
Tim MacDonald, Stratford
Paul Van Gerwen, West Perth

MARKETING COMMITTEE

Richard Smelski, Perth East - Chair
Harry Brightwell, Stratford
Rob Brown, Stratford
Ron Cameron, Stratford
Linda Carter, Stratford
Jennifer Lamb, Stratford
Tim MacDonald, Stratford
Trevor Paetkau, Stratford
Laura Pogson, Stratford
Larke Turnbull, Stratford

MAYOR'S GALA COMMITTEE

Leanne Perreault, Stratford - Co-Chair
Mary-Ann Reid, Stratford - Co-Chair
Rob Brown, Stratford
Ron Cameron, Stratford
Alyson Kent, Stratford
Tim MacDonald, Stratford
Mary McTavish, Stratford
Trevor Paetkau, Stratford
Laura Pogson, Stratford
Larke Turnbull, Stratford

SPECIAL PROJECT VOLUNTEERS

Isabel Cook, Stratford
Gail Willson, Stratford

STAFF

Elizabeth Hachborn, Executive Director
Darlene Morash, Development Intern

NEW COMMUNITY INVESTMENTS



The Maranger family from left: Justin, Cole, Frances, Jesse, Peter and Beverly. Photo by LAF's Photography

George, Dale and Geoff Carnegie

North Perth sporty kids

Jim and Laurel Laughton with children Catherine and Dennis

This year the Community Foundation partnered with three families and one municipality to create four new endowed funds. These investments in our community will help create strong, resilient and vital places to live, work and play in Perth County.

Maranger Family Fund

Community is vitally important to Peter and Beverley Maranger. The Stratford couple is well known for the time they spend volunteering to help improve the lives of people in Stratford, Perth County and beyond. So it was only natural that, when they learned of the Stratford and Perth County Community Foundation, they decided to create the Maranger Family Fund.

Many aspects of this kind of community giving appeal to Peter and Beverley. They were excited to learn that an endowment fund can be created with relatively small amounts of money. That the funds are endowed or invested also appeals to them. The fund itself is not depleted; only the interest is used for grants.

Another feature that attracted the Marangers was the ability of the donor to direct grant income to a specific field of interest or specific charity. The Marangers decided against a narrow focus and instead chose to create an unrestricted fund which gives the Foundation maximum flexibility in responding to current and future community needs anywhere in the county. Peter explains, "The needs of today may not be the needs of tomorrow."

Peter and Beverley expect the fund will become an important part of their family's philanthropy. Just as they have been mentored by family members and others in giving and volunteering, they hope their example will be a good role model for their four children – Jesse, Justin, Frances and Cole.

Carnegie Family Fund

Stephen and Dale Carnegie married in the 1960s deciding to settle in the Town of Listowel. There Steve was a partner in a thriving accounting firm and enjoyed being an entrepreneur. Dale taught school until sons Geoff and George were born. Steve and Dale were family and community-minded.

The Carnegie family wanted to find a way of giving back to the community that had been good to them. Dale Carnegie explains. "There is an old proverb that says 'It takes a village to raise a child,' and Listowel was that village for our family. Listowel has been a caring community in which to live, work and raise our sons." Dale raised her sons alone after Stephen passed away in 1987.

The Carnegie Family wanted to leave a living legacy as a way of saying thank you to the community for their quality of life. They believed an ideal way to accomplish this was through the Stratford and Perth County Community Foundation. They established the Carnegie Family Fund with the annual income from the Fund directed to charitable causes and charitable organizations in the Town of Listowel. As well as giving back to the town the Carnegie Family Fund is also in memory of husband and father, Steve Carnegie.

North Perth Sports for Kids Fund

The brainchild of Amy Gangl, Program Co-ordinator, Municipality of North Perth the North Perth Sports for Kids Fund will support kids in economically disadvantaged situations, to play sports and be involved in recreational activities in the Municipality of North Perth.

"Today, more than ever, there are children who cannot participate in recreational activities due to a lack of family resources," explains Amy. "After researching the opportunities available for families the municipality concluded that more needed to be done to facilitate access by all children to the programs available in the community that contribute to the development of happy and healthy children."

Seed money for the fund came from a bequest from the late Jean Oke of Listowel who left money to the Municipality of North Perth to be used to benefit youth and children in recreation. The hope is that the Fund will grow with contributions from individuals and organizations who want to leave a lasting legacy and believe that when young people participate in organized sports, they learn values and skills that will help them develop into good citizens.

The funds can be accessed through a confidential application process administered by the Salvation Army in North Perth who will review the submissions and disburse payments to qualified recipients. Application forms are available through several agencies in North Perth and from the Community Foundation website.

Jim and Laurel Laughton Family Fund

Both Jim and Laurel Laughton grew up in Perth County, moved away and returned to raise their family. They were enticed back by the quality of life they experienced here and wanted the same for their children.

The Laughton's two children grew up active in the community while their parents encouraged this by being involved in youth activities themselves – Jim coached ball and Laurel coached bowling.

The Laughton's know that families and youth today face many challenges. Life is more complex than it's ever been. Young people face challenges that for older generations were nonexistent. The Laughton's want to help young people make good choices. They hope to do this by building awareness of the activities that already exist and by helping to fund new programs and opportunities for this vulnerable age group.

The Laughton's believe that Perth County is a vital and strong community. They want to ensure that our most important resource – our young people – develop into healthy, capable and conscientious adults. To accomplish this end the Jim and Laurel Laughton Fund will support projects, causes and organizations that contribute to the physical, psychological, social and emotional well being of youth.

Plans Underway for Foundation Event



The Community Foundation contracted with Helen Dowd and Bev Rock from Operation Organize to conduct research to map events hosted by charities and non-profit organizations across the county and to explore the level of awareness there was for the work of the Foundation. They investigated event options with the goal of finding the Community Foundation a venue for awareness building. The finished piece of research provided the charitable sector with a valuable resource of existing county events and a useful planning tool. The report's recommendations were instrumental in laying the groundwork for the Foundation's inaugural event planned for January 15, 2010.

Serving the Charitable Sector through educational workshops



With help from Ontario Trillium Foundation we were able to host our first educational workshops for the charitable sector in Listowel, St. Marys and Stratford. Facilitator, Sharon Gilmour-Glover (pictured) from Jump-Point provided participants with practical, easy-to-use tools that could be put into action to help their organizations ensure resilient, sustainable and effective operations. When developed as part of a routine way of processing decisions, challenges or just day-to-day activities attendees discovered that the 7 tools in the "The SIMPLE

Toolbox" could increase individual and team effectiveness and build organizational productivity.

Partnership with Foundation for Rural Living



The Foundation for Rural Living (FRL) advances the non-profit and voluntary sector by building sustainable rural capacity thus enhancing the quality of life for rural citizens. One of its successful programs is an innovative and effective Rural Development Officer (RDO) Program that places workers in rural organizations. The program is based on a Job Creation Partnership (JCP) Model. "It is our goal that through participation in this program, organizations can better respond to the priorities

of their communities by utilizing the skills and talents of people who are seeking re-entry into the workforce," explains Anita Hayes, Executive Director of FRL. In return host organizations provide mentoring and learnings in new areas thus enhancing the placement's employability. Darlene Morash (pictured) who joined the staff in March 2009, was primarily responsible for the development, populating and utilization of a database to enhance and advance the work of the Community Foundation. FRL has a 75% RDO employment placement rate and Darlene was one of the success stories moving on to full time employment with an area business in October.

Since its start in 2004, the Stratford Perth County Community Foundation has given out over \$100,000 in grants to community projects.



COMMUNITY FUNDS

This is a list of endowment funds held by the Community Foundation as of August 31, 2009. The income from these funds is returned to the community for the benefit of the residents of Perth County. The dollar amount shown indicates the total capital contributed to the fund. For more detailed information on any of these funds please visit our website www.spccf.ca.

UNRESTRICTED FUNDS

These discretionary funds give donors the opportunity to support a variety of causes and organizations. Income from these funds is not tied to any specific charity or area of interest, allowing the Foundation greatest flexibility to respond to current and changing needs in the community.

Community Fund	\$254,970
Founders' Fund	\$6,100
Ideal Supply Community Fund	\$90,700
Maranger Family Fund	\$5,000

FIELD OF INTEREST FUNDS

These funds allow the donor to designate a specific area of interest (e.g. education, children, or arts) in which grants will be made. Field of Interest funds ensure the donor's interests and values are supported now and in the future.

Carnegie Family Fund	\$50,308
George & Edna Hislop Family Fund	\$9,409
IPM 2005 Fund	\$75,000
Jim & Laurel Laughton Family Fund	\$4,000
John & Colleen MacDonald Family Fund	\$20,000
Mansbridge Environment Fund	\$10,700
McCully Centre for Rural Learning Fund	\$500
Meulensteen Environment Fund	\$1,800
North Perth Sports for Kids Fund	\$5,300
Reading Fund	\$5,980

DONOR-ADVISED FUNDS

These funds allow donors the opportunity to be actively involved in granting decisions making annual recommendations to the Board of Directors.

Donald McTavish Conservation Fund	\$101,033
Judi Hemmingway Memorial Fund	\$10,450
Mathieson Family Fund	\$6,440
Orr Family Fund	\$12,550

DESIGNATED FUNDS

These funds are established to benefit specific charitable organizations named by the donor. The earnings from these funds are distributed to the designated organization on an annual basis.

Foundation's Operating Endowment	\$14,994
Sid and Margaret Henry Fund	\$7,589
North Perth Public Library Fund	\$9,542
Timothy Findley Fund	\$4,279

COMMUNITY GRANTS

From the Community Fund In partnership with the AIA High Fives for Kids Foundation a grant to the Brodhagen Chamber of Commerce of \$2,210 was provided to fund a 'Community Playground' to provide for a safe, accessible play place to encourage creative play, social engagement and physical exploration for children in the community. *top picture*

- The Milverton Agricultural Society was awarded \$1,000 for New Director Training to inform, educate, and inspire new volunteers of the Agricultural Society through attending the annual Ontario Association of Agricultural Societies convention. *2nd picture*

- Grant to the Perth County Historical Foundation of \$1,500 supported the project to acquire the Brooks Steam Car, a 1925 Stratford Steamer, manufactured in Stratford to be on permanent display at the Stratford-Perth Museum.

- Made possible through the help of the RBC Foundation the Upper Thames River Conservation Authority was awarded \$2,500 to fund the St. Marys Water Conservation Pilot Project an innovative partnership with the Town of St. Marys and 200 homeowners to install energy efficient equipment in homes in St. Marys. *3rd picture, from St. Marys Journal Argus*

From the Ideal Supply Community Fund A grant of \$2,210 to Voices/Community Living funded Parents in Perth, a new project to bring together parents of children with intellectual disabilities for the purpose of providing support, education, and a place to share personal stories.

From the George and Edna Hislop Family Fund and the John and Colleen MacDonald Family Fund The Perth District Health Unit received a grant of \$3,200 for Young Parents' Place to provide funding to sustain this successful program for at-risk young parents and their children, operating in Stratford and North Perth.

From the Mathieson Family Fund A grant of \$1,200 to the Foundation for Enriching Education supported Challenge Day a project for youth in grades 9 and 10 involving workshops designed to build self esteem, celebrate diversity while offering an anti-bullying, anti-violence message. *4th picture*

From the Donald McTavish Conservation Fund A grant to the Upper Avon River Conservation Club through the Upper Thames River Conservation Authority of \$880 was awarded to fund a wind break to prevent adjacent fields from wind erosion, increase the heat units available to grow crops, provide animal habitats and add bio-diversity. *bottom picture*



SUMMARIZED FINANCIAL STATEMENTS

Balance Sheet As at August 31, 2009

	2009	2008
Assets		
Cash	\$ 17,976	\$ 38,089
Accounts receivable	5,100	3,627
GST recoverable	467	438
Prepaid expenses	1,282	2,711
Investments	<u>668,511</u>	<u>611,776</u>
	\$ 693,336	\$ 656,641
Liabilities		
Accounts payable	\$ 21,537	\$ 4,401
Deferred revenue	12,633	-
Grants payable	<u>8,580</u>	<u>12,100</u>
	42,750	16,501
Fund Balances		
Operating fund	2,042	29,594
Endowment fund	639,228	596,699
Funds for distribution	<u>9,316</u>	<u>13,847</u>
	650,586	640,140
	\$ 693,336	\$ 656,641

Statement of Operations For the year ended August 31, 2009

	2009	2008
Revenue		
Donations	\$ 128,464	\$ 129,090
Corporate sponsorships	16,250	12,300
County and Municipality grants	5,000	10,000
Ontario Trillium Foundation	16,267	-
Investment income	20,109	26,344
Unrealized gains and losses	<u>(46,818)</u>	<u>(41,568)</u>
	139,272	136,166
Expenditures	<u>112,226</u>	<u>103,905</u>
	27,046	32,261
Grants and Distributions		
Arts and culture	4,900	5,500
Health	-	500
Education and literacy	-	1,827
Environment	3,580	8,500
Social welfare	4,200	1,000
Heritage preservation	-	3,000
Recreation and sports	400	1,500
Seniors	-	1,500
Children and youth	<u>3,520</u>	<u>3,600</u>
	16,600	26,927
Excess of revenue over expenditures for the year	\$ 10,446	\$ 5,334

Thank you to all our Donors!

Accumulated donations to August 31, 2009

\$250,000+

Estate of B.J. Sibold

\$100,000-\$249,999

Ideal Supply Company Ltd.
Ontario Trillium Foundation

\$50,000-\$99,999

Dale Carnegie
International Plowing Match 2005

\$25,000-\$49,000

The Bickell Foundation
Alec and Sam (Mary) McTavish
Lillian McTavish (deceased)
City of Stratford

\$10,000-\$24,999

BMO Bank of Montreal
Elizabeth Hachborn
Tim and Alexandra MacDonald
John H. and Colleen MacDonald
McConnell Foundation
Donald and Marion McDougall
Robert and Mary McTavish
Orr Insurance Brokers Inc.
County of Perth

\$5,000-\$9,999

Community Foundations of Canada
Culliton Brothers Ltd.
Glen and Ruth Hebel
Jim and Laurel Laughton
Peter Mansbridge and Cynthia Dale
Peter and Beverley Maranger
Stuart and Susan McTavish
Tom and Laura Tanner

\$1,000-\$4,999

Accumetal Manufacturing Inc.
AIA High Five for Kids Foundation
Arden Park Hotel
Harry and Dorell Brightwell
Brown ClimateCare
Cavalier Equestrian
Roger Cotton and Marcia Matsui
Friends of the North Perth Library
Don and Mary Henry
James and Ollie Henry
David Henry
Stratford Home Hardware Building Centre
Hyde Construction Ltd.
Robert and Patricia Lightfoot
John and Norma MacDonald
Doug MacDougald and Barbara Green
Norman and Cathy MacLennan
Dan and Carolyn Mathieson
Bert (deceased) and Helen Merrill
Meulenstein Tire and Auto Service
Jane Morley
Mornington Communications
Co-operative Ltd.
New-Form Tools Ltd
Dr. Dennis Nuhn Dentistry
Berny and Sharon Nymeyer
Jane Proudlove
Eric Proudlove

Sarah Proudlove
RBC Foundation
Peter and Michelle Sibold
Annabell Thomson
UAP Inc.
Peter and Mary Jo Van Drunen
Anne Walsh
Waste Management
William Whitehead
Timothy and Madeline Woodhead

\$500-\$999

Wayne and Peggy Brightwell
Jeff Carruthers
Gerald Culliton
Steven Elsdon
Dax Johnston
Doug MacDougald
Maxims Limited Partnership
Brenda Mitchell
Quimby Chadwick Designs
Scotiabank
Richard and Jean Smelski
William Somerville
Rheo and Sally Thompson

\$100-\$499

Abbott Laboratories Employees
Evelyn Adamson
James and Wendy Anderson
Dr. Glenn and Susan Armstrong
Nick and Virginia Aroutzidis
Bonnie Baker
Dale and Brenda Bartmann
Ted Blowes and Pat Jones
Nancy Bridge
Scott Brookshaw
CMB Electronic Lighting Inc.
Mary-Ellen Conners
Keith and Frances Culliton
Culliton Law
Dan Daum
Marc Devlin
Felix Devlin
Charles Dunphy
Marie Dwyer
Eric and Marsha Eberhardt
George Emerson
Erb International Inc.
Jim Estill
The Gentle Rain
Gerri Electric Wholesale Ltd.
Great Lakes Nutrition Inc.
Susan E. Greer
Peter and Mary Hall
Joan and Patrice Hemsworth
Joe and Sue Hishon
Joe and Hazel Hislop
Ross and Brenda Hislop
John Leitch
Johnathon and Gregory MacDonald
Manulife Financial
Frank and Phyllis Mathieson
Paul and Colleen Mathieson
Robert and Melanie Mathieson
Mikalachki Investment Management
Darrell and Joan Rolph
Allan and Nancy Rothwell
Diane Rounds

Ron Roy
Paul and Joan Rutherford
Gary and Kathy Ryan
Betty Schaefer
Ron Schulthies
Manfred Schwengers
Scotia Intek Stratford Staff
Kirk and Lori Speiran
James and Chantel Steed
Steed Standard Transport
Stratford Public Library Board
TigerTel Communications Inc.
Touch of Dutch Landscaping
Mary Turner
Kenneth and Barbara Vallis
Steve Van den Hengel
John Wilkinson and Loretta Shannon
Gail Willson
Pauline Yang
Jim and Beverley Young

Under \$100

172 contributions

Gifts-in-Kind

Blowes Office Supplies
Country Computer Store Inc.
Festival Furniture
Shawna Gigacz/Just Spiffy
Ideal Supply Company Ltd.
Tim MacDonald
Rambri Management
Sun Signs
Anne Marie Tymec/ Mountain Mitchell LLP
Juli Waller/Grrraphics
Zellers, Stratford

MEMORIAL GIFTS

During this year gifts were received in memory of:

Pat Belanger Sr.
Jane Brickman
Al Calder
Marion Davies
Gordon Drummond
Orville Good
Hilda Hartman
George Hislop
Christopher Lindner
Margaret Mayberry
Bert Merrill
Peggy Morris
Klaas Otten
Helen Sparrow
Robert Sparrow

SPECIAL OCCASION GIFTS

Special Occasion gifts were received recognizing:

Don & Kathy Burton's 40th Wedding Anniversary
June Wilson and Brian Junner's wedding
John & Sue Lee
Tim MacDonald's birthday
Riley Mathieson's 7th birthday
John Wilkinson's birthday

Charity Registration #: 88488 4305 RR001

THANK YOU TO OUR COMMUNITY PARTNERS

Platinum Partner
annual support of \$4,000

BMO  Bank of Montreal

Silver Partners
annual support of \$2,000



Bronze Partners
annual support of \$1,000



Generously supported by:



We are part of Canada's community foundation movement, represented by more than 170 community foundations from coast to coast.

